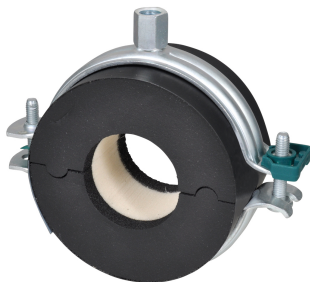


BISOFIX® E19

(D 05 10)

for insulated pipes 12.0 - 219.1 mm

M8/10 - M16



Features and Benefits

- insulated pipe support with pipe clamp BIS Bifix® G2
- clamp with quick locking system
- for fixing of thermal isolated pipe of steel, copper or stainless steel
- vapour proof glueing to pipe insulation
- when installing the pipe support, always align the contact areas of the insulation shells horizontally (to prevent tensile and pressure forces)
- with self-adhesive strip for easy closing of pipe support
- material: steel clamp; pipe support made of PIR foam (core), synthetic rubber (sides) and a vapour-proof layer of black PVC
- does not contain CFC, HCFC, formaldehyde or cadmium
- excellent thermal and mechanical properties
- BIS Bifix G2 Clamp: surface protection:
 - product is part of the BIS UltraProtect® 1000 system
 - suitable for in- and outdoor applications
 - stands min. 1,000 hours salt spray test (max. 5% red rust) according to ISO 9227
- working temperature from -45 °C to +105 °C

| Part No. | D (mm) | D (°) | DN | G | B (mm) | h (mm) | b (mm) | s (mm) | F _{a,z} (N) | Pack 1 |
|----------|-------------|----------|-----|-------|-----------|-----------|-----------|-----------|-------------------------|--------|
| 2211012 | 12.0 | - | - | M8/10 | 91 | 44 | 50 | 19.5 | 100 | 18 |
| 2211015 | 15.0 - 16.0 | - | - | M8/10 | 97 | 46 | 50 | 19.5 | 100 | 18 |
| 2211017 | 17.2 - 18.0 | 3/8 | 10 | M8/10 | 97 | 48 | 50 | 19.0 | 100 | 18 |
| 2211021 | 21.3 - 22.0 | 1/2 | 15 | M8/10 | 110 | 53 | 50 | 22.5 | 100 | 18 |
| 2211027 | 26.9 - 28.0 | 3/4 | 20 | M8/10 | 118 | 56 | 50 | 22.5 | 100 | 12 |
| 2211035 | 35.0 | 1 | 25 | M8/10 | 125 | 59 | 50 | 22.5 | 100 | 12 |
| 2211042 | 42.4 | 1 1/4 | 32 | M8/10 | 134 | 65 | 50 | 23.5 | 150 | 12 |
| 2211048 | 48.3 | 1 1/2 | 40 | M8/10 | 142 | 68 | 50 | 23.5 | 225 | 18 |
| 2211054 | 54.0 | - | - | M8/10 | 148 | 71 | 50 | 23.5 | 225 | 18 |
| 2211060 | 60.3 | 2 | 50 | M8/10 | 155 | 74 | 50 | 23.5 | 350 | 18 |
| 2211064 | 64.0 | - | - | M8/10 | 155 | 76 | 50 | 23.5 | 350 | 18 |
| 2211070 | 70.0 | - | - | M8/10 | 164 | 80 | 50 | 24.5 | 425 | 18 |
| 2211076 | 76.1 | 2 1/2 | 65 | M8/10 | 172 | 83 | 50 | 24.5 | 575 | 18 |
| 2211089 | 88.9 | 3 | 80 | M8/10 | 181 | 89 | 50 | 24.5 | 875 | 9 |
| 2211102 | 101.6 | - | - | M8/10 | 201 | 99 | 50 | 28.0 | 1,000 | 30 |
| 2211108 | 108.0 | - | - | M8/10 | 209 | 101 | 50 | 27.0 | 1,075 | 30 |
| 2211114 | 114.3 | 4 | 100 | M8/10 | 217 | 106 | 50 | 26.5 | 1,250 | 30 |
| 2211133 | 133.0 | - | - | M8/10 | 238 | 108 | 100 | 26.5 | 1,475 | 12 |
| 2211140 | 139.7 | 5 | 125 | M8/10 | 248 | 119 | 100 | 26.5 | 1,700 | 12 |
| 2211159 | 159.0 | - | - | M8/10 | 275 | 132 | 100 | 29.0 | 1,950 | 12 |
| 2211168 | 168.3 | 6 | 150 | M8/10 | 261 | 128 | 100 | 21.5 | 2,125 | 12 |
| 2211219 | 219.1 | 8 | 200 | M16 | 345 | 152 | 100 | 21.5 | 3,525 | 10 * |

* provided with BIS HD500 Clamp instead of BIS Bifix® G2.

Complementary

- BIS RapidRail® Fixing System
- BIS Fixing Accessories
- BIS Fastenings